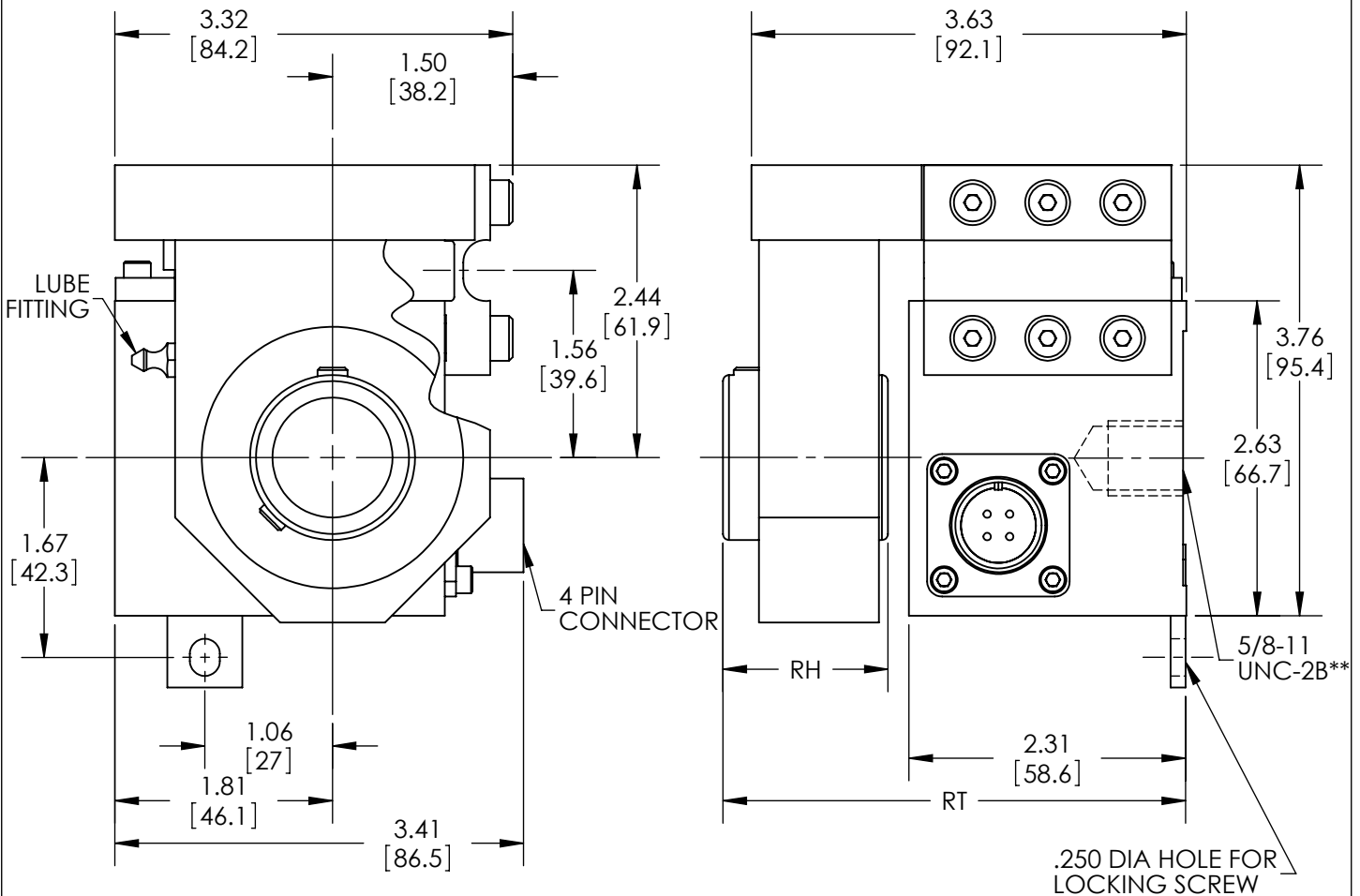


TENSIONCELL MODEL C30

ROTATING SHAFT MOUNTING

CAPACITY RANGE (lbs)											
NOMINAL	0-4	0-8	0-13	0-20	0-30	0-50	0-90	0-140	0-200	0-300	0-500
CODE	L*	M*	N	P	S	T	U	W	X	Y	Z



Fifteen standard shaft diameters. See table below.
W1 unit shown here. W2 unit is applied at the opposite end of roll.
W1 unit clamps the shaft while W2 unit allows for temperature expansion of the shaft.
Both units have self-aligning feature.

SHAFT DIAMETER (in)																
INCHES	.500	.563	.625	.688	.750	.875	.938	1.00	1.063	1.125	1.188	1.250	1.313	1.375	1.438	
CODE	08	09	10	11	12	14	15	16	17	18	19	20	21	22	23	
RH	1.31				1.38				1.53				1.69			
RT	3.88								4.03				4.13			

*Tensioncells in this range supplied for shaft sizes up to maximum 3/4" diameter unless approved by factory.
**Comptrol wall mount Tensioncells are mounted with a 5/8-11 UNC-2B bolt at the roll centerline and a locking screw through the locating tab which maintains rotational position of the Tensioncell.